



APPENDIX E

AGRICULTURAL LANDS NORTH KITSAP

KITSAP COUNTY, WASHINGTON

Farm Land Business

Farm land business are properties that advertise as a business. Businesses were verified by information provided by the following:
Kitsap County Conservation District
Kitsap Community Agricultural Alliance- <http://www.kitsapag.org/>
Bainbridge Island Farms
Buy Local Foods in Kitsap- <http://www.buylocalfoodsinkitsap.org/>
Kitsap County Farm Map - Washington State University Spring 2009
http://kitsap.wsu.edu/ag/farm_map.pdf
Kitsap Tree Farms-<http://kitsapfamily.com/trees.htm>

Farm/Agricultural Land - Current Use

Farm/Agricultural Land - Current Use are parcels that are under the Farm & Agricultural Land current use exemption program. (RCW 84.34.020) described as parcels devoted primarily to the production of livestock, equine related activities or agricultural commodities for commercial purposes.

Agricultural Support Sites

Small Farm parcels as verified by Kitsap Conservation District

Open Space Land

Open Space Lands are parcels that are under the Open Space land current use exemption program (RCW 84.34) described as lands zoned for open space, land devoted to preservation or any land previously classified as farm and agricultural land that no longer meets the criteria or a 'traditional farmland' devoted to a use inconsistent with agricultural uses and has a high potential of returning to commercial agricultural.

Prime and other Important Farmlands

- Prime Farmland
- Prime Farmland if irrigated
- Statewide Importance
- Prime Farmland, if drained

Concentration Areas

- Reservation Boundaries
- Urban Growth Area Boundary
- Incorporated City Boundary
- Tax Parcels

Watercourses (defined in WAC 222-16-030)

- Fish Habitat Water Type Code
- (S) Designated Shoreline of the State
 - (F) Fish Habitat
 - (N) Non-fish Habitat
 - (U) Unknown, unmodeled hydrographic feature.

WaterBody Cartographic Feature Code

- Lake, Pond, Reservoir, Gravel pit or quarry filled with water
- Salt Water
- State Highway
- Arterial
- Collector

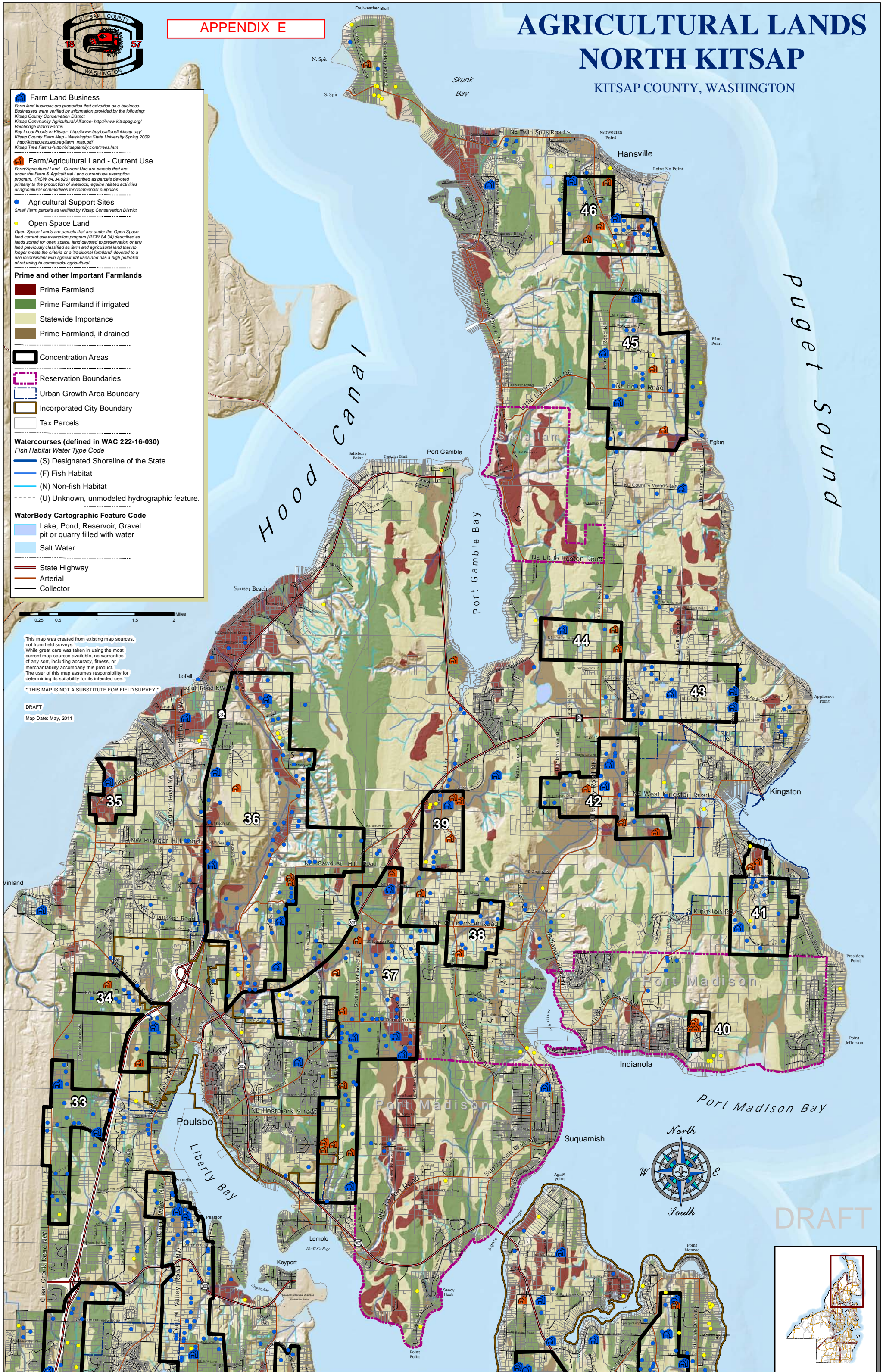
0 0.25 0.5 1 1.5 2 Miles

This map was created from existing map sources, not from field surveys. While great care was taken in using the most current map sources available, no warranties of any sort, including accuracy, fitness, or merchantability accompany this product. The user of this map assumes responsibility for determining its suitability for its intended use.

* THIS MAP IS NOT A SUBSTITUTE FOR FIELD SURVEY *

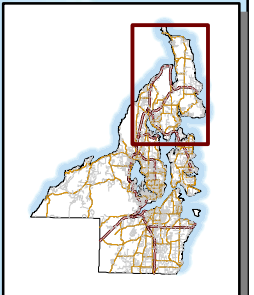
DRAFT

Map Date: May, 2011



PUGET SOUND

DRAFT





AGRICULTURAL LANDS CENTRAL KITSAP

KITSAP COUNTY, WASHINGTON

Farm Land Business
Farm land business are properties that advertise as a business. Businesses were verified by information provided by the following:
Kitsap County Conservation District
Kitsap Community Agricultural Alliance- <http://www.kitsapag.org/>
Bainbridge Island Farms
Buy Local Foods in Kitsap- <http://www.buylocalfoodskitsap.org/>
Kitsap County Farm Map - Washington State University Spring 2009
http://kitsap.wsu.edu/ug/farm_map.pdf
Kitsap Tree Farms- <http://kitsapfamily.com/trees.htm>

Farm/Agricultural Land - Current Use
Farm/Agricultural Land - Current Use are parcels that are under the Farm & Agricultural Land current use exemption program. (RCW 84.34.020) described as parcels devoted primarily to the production of livestock, equine related activities or agricultural commodities for commercial purposes

Agricultural Support Sites
Small Farm parcels as verified by Kitsap Conservation District

Open Space Land
Open Space Lands are parcels that are under the Open Space land current use exemption program (RCW 84.34) described as lands zoned for open space, land devoted to preservation or any land previously classified as farm and agricultural land that no longer meets the criteria or a "traditional farmland" devoted to a use inconsistent with agricultural uses and has a high potential of returning to commercial agricultural.

Prime and other Important Farmlands
■ Prime Farmland
■ Prime Farmland if irrigated
■ Statewide Importance
■ Prime Farmland, if drained

Concentration Areas
 Reservation Boundaries
 Urban Growth Area Boundary
 Incorporated City Boundary
 Tax Parcels

Watercourses (defined in WAC 222-16-030)
 Fish Habitat Water Type Code
— (S) Designated Shoreline of the State
— (F) Fish Habitat
— (N) Non-fish Habitat
— (U) Unknown, unmodeled hydrographic feature.

WaterBody Cartographic Feature Code
■ Lake, Pond, Reservoir, Gravel pit or quarry filled with water
■ Salt Water
— State Highway
— Arterial
— Collector

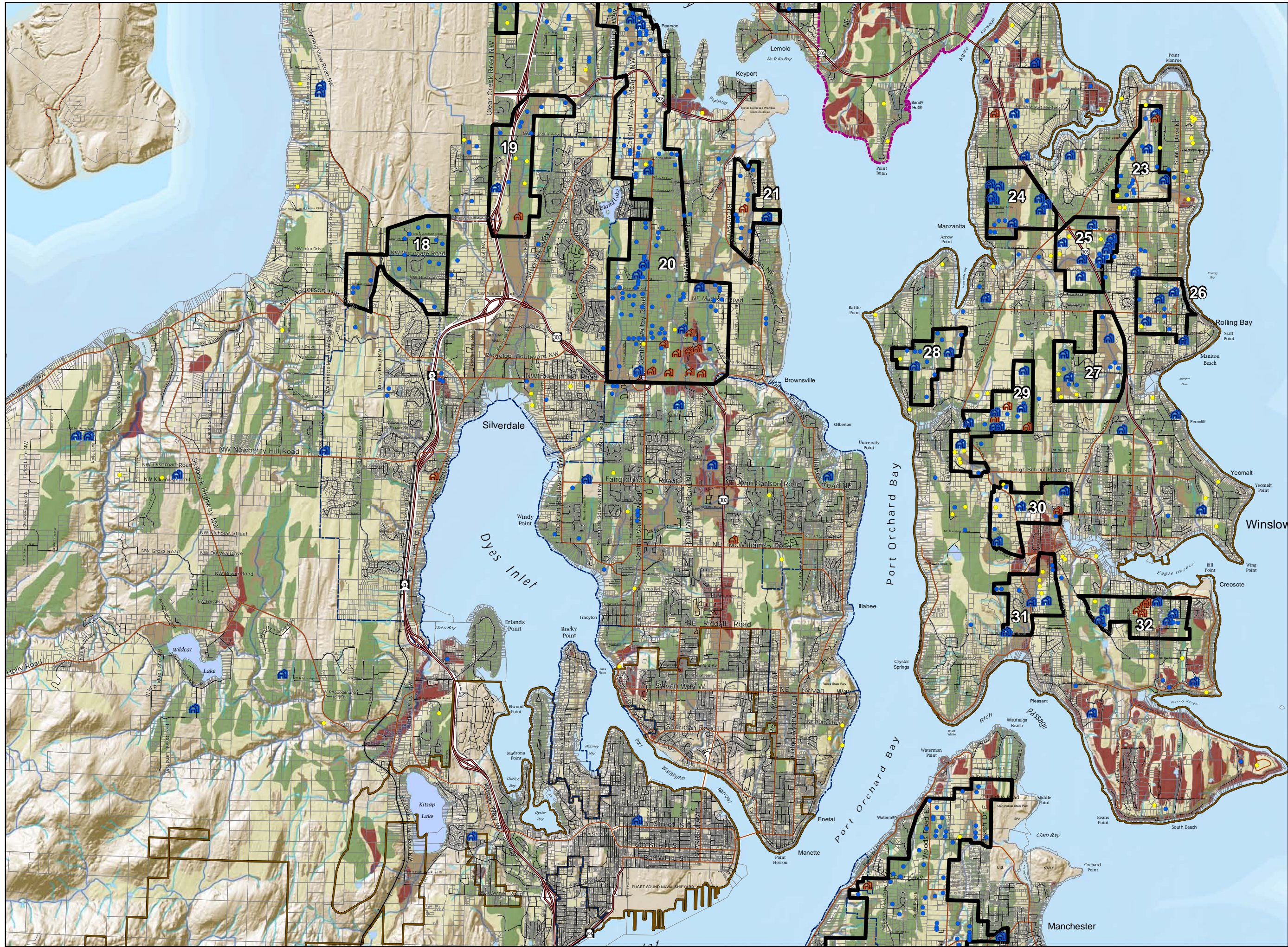


0 0.25 0.5 1 1.5 2 Miles

This map was created from existing map sources, not from field surveys. While great care was taken in using the most current map sources available, no warranties of any sort, including accuracy, fitness, or merchantability accompany this product. The user of this map assumes responsibility for determining its suitability for its intended use.

* THIS MAP IS NOT A SUBSTITUTE FOR FIELD SURVEY *
 Farm locations represented on this map are estimated

DRAFT
 Map Date: May, 2011





AGRICULTURAL LANDS WEST KITSAP

KITSAP COUNTY, WASHINGTON

Farm Land Business

Farm land business are properties that advertise as a business. Businesses were verified by information provided by the following:
Kitsap County Conservation District
Kitsap Community Agricultural Alliance- <http://www.kitsapag.org/>
Bainbridge Island Farms
Buy Local Foods in Kitsap- <http://www.buylocalfoodskitsap.org/>
Kitsap County Farm Map - Washington State University Spring 2009
http://kitsap.wsu.edu/ag/farm_map.pdf
Kitsap Tree Farms <http://kitsapfamily.com/trees.htm>

Farm/Agricultural Land - Current Use

Farm/Agricultural Land - Current Use are parcels that are under the Farm & Agricultural Land current use exemption program. (RCW 84.34.020) described as parcels devoted primarily to the production of livestock, equine related activities or agricultural commodities for commercial purposes

Agricultural Support Sites

Small Farm parcels as verified by Kitsap Conservation District

Open Space Land

Open Space Lands are parcels that are under the Open Space land current use exemption program (RCW 84.34) described as lands zoned for open space, land devoted to preservation or any land previously classified as farm and agricultural land that no longer meets the criteria or a "traditional farmland" devoted to a use inconsistent with agricultural uses and has a high potential of returning to commercial agricultural.

Prime and other Important Farmlands

- Prime Farmland
- Prime Farmland if irrigated
- Statewide Importance
- Prime Farmland, if drained

Concentration Areas

- Reservation Boundaries
- Urban Growth Area Boundary
- Incorporated City Boundary
- Tax Parcels

Watercourses (defined in WAC 222-16-030)

- Fish Habitat Water Type Code
- (S) Designated Shoreline of the State
 - (F) Fish Habitat
 - (N) Non-fish Habitat
 - (U) Unknown, unmodeled hydrographic feature.

WaterBody Cartographic Feature Code

- Lake, Pond, Reservoir, Gravel pit or quarry filled with water
- Salt Water

- State Highway
- Arterial
- Collector



0 0.2 0.4 0.8 1.2 1.6 Miles

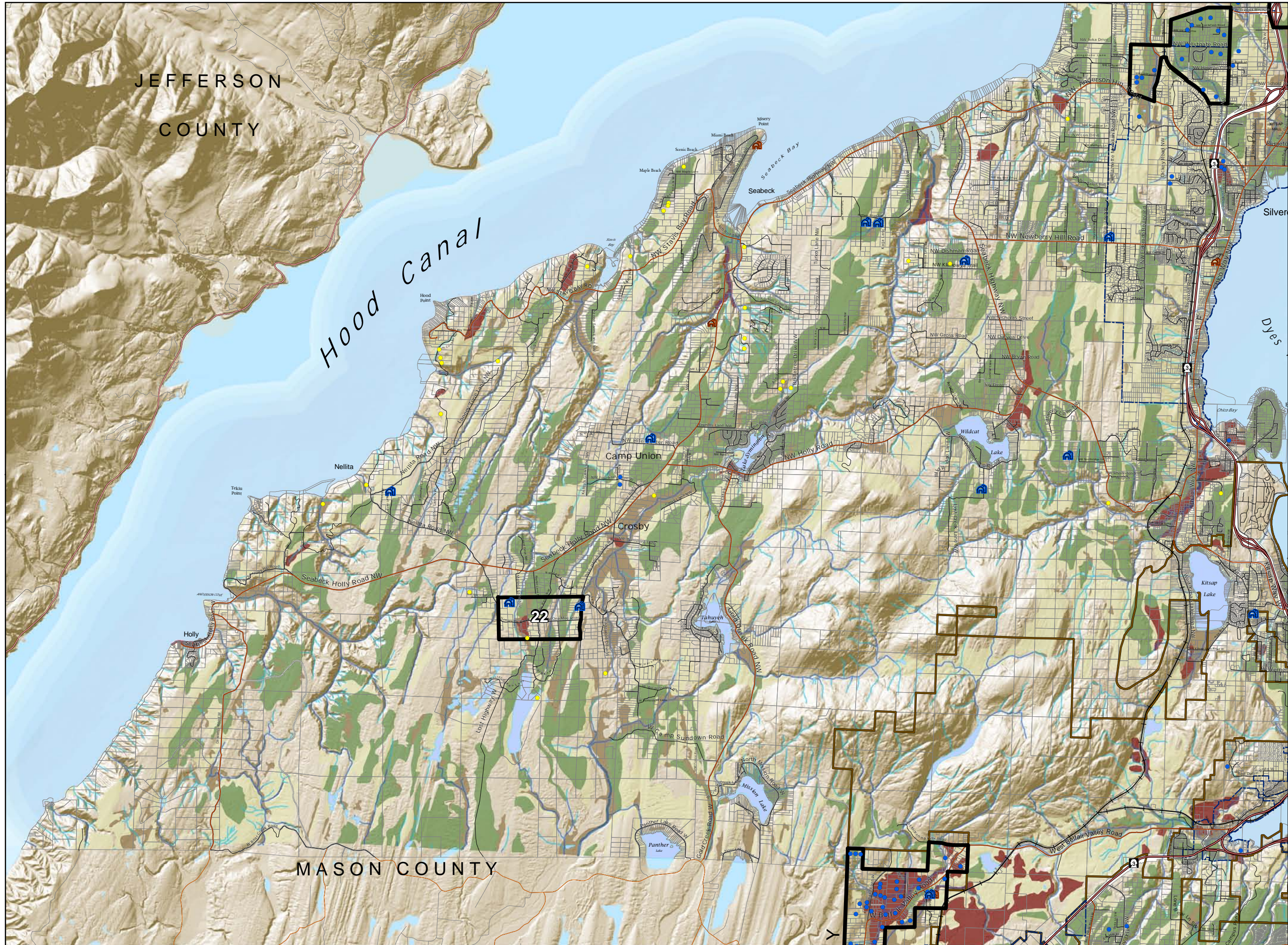
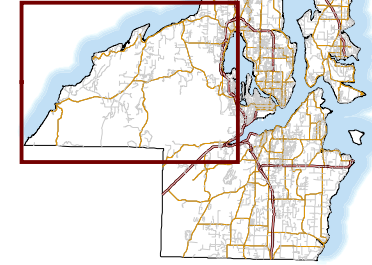
This map was created from existing map sources, not from field surveys. While great care was taken in using the most current map sources available, no warranties of any sort, including accuracy, fitness, or merchantability accompany this product. The user of this map assumes responsibility for determining its suitability for its intended use.

* THIS MAP IS NOT A SUBSTITUTE FOR FIELD SURVEY *

Farm locations represented on this map are estimated

DRAFT

Map Date: May, 2011



JEFFERSON COUNTY

Hood Canal

MASON COUNTY

Silver

Dyes

Kitsap Lake

Wildcat Lake

Mission Lake

Panther Lake

Seabeck Bay

Seabeck Bay

Seabeck Bay

Seabeck Bay

Seabeck Bay

Seabeck Bay

Seabeck Bay

Seabeck Bay

Seabeck Bay



AGRICULTURAL LANDS SOUTH KITSAP

KITSAP COUNTY, WASHINGTON

Farm Land Business
 Farm land business are properties that advertise as a business. Businesses were verified by information provided by the following:
 Kitsap County Conservation District
 Kitsap Community Agricultural Alliance - <http://www.kitsapag.org/>
 Bainbridge Island Farms
 Bay Local Foods in Kitsap - <http://www.baylocalfoods.kitsap.org/>
 Kitsap County Farm Map - Washington State University Spring 2009
http://kitsap.wsu.edu/ig/farm_map.pdf
 Kitsap Tree Farms <http://kitsapfamily.com/trees.htm>

Farm/Agricultural Land - Current Use
 Farm/Agricultural Land - Current Use are parcels that are under the Farm & Agricultural Land current use exemption program. (RCW 84.34.020) described as parcels devoted primarily to the production of livestock, equine related activities or agricultural commodities for commercial purposes

Agricultural Support Sites
 Small Farm parcels as verified by Kitsap Conservation District

Open Space Land
 Open Space Lands are parcels that are under the Open Space land current use exemption program (RCW 84.34) described as lands zoned for open space, land devoted to preservation or any land previously classified as farm and agricultural land that no longer meets the criteria or a "traditional farmland" devoted to a use inconsistent with agricultural uses and has a high potential of returning to commercial agricultural.

Prime and other Important Farmlands

- Prime Farmland
- Prime Farmland if irrigated
- Statewide Importance
- Prime Farmland, if drained

Concentration Areas

- Reservation Boundaries
- Urban Growth Area Boundary
- Incorporated City Boundary
- Tax Parcels

Watercourses (defined in WAC 222-16-030)
 Fish Habitat Water Type Code

- (S) Designated Shoreline of the State
- (F) Fish Habitat
- (N) Non-fish Habitat
- (U) Unknown, unmodeled hydrographic feature.

WaterBody Cartographic Feature Code

- Lake, Pond, Reservoir, Gravel pit or quarry filled with water
- Salt Water

Roads

- State Highway
- Arterial
- Collector



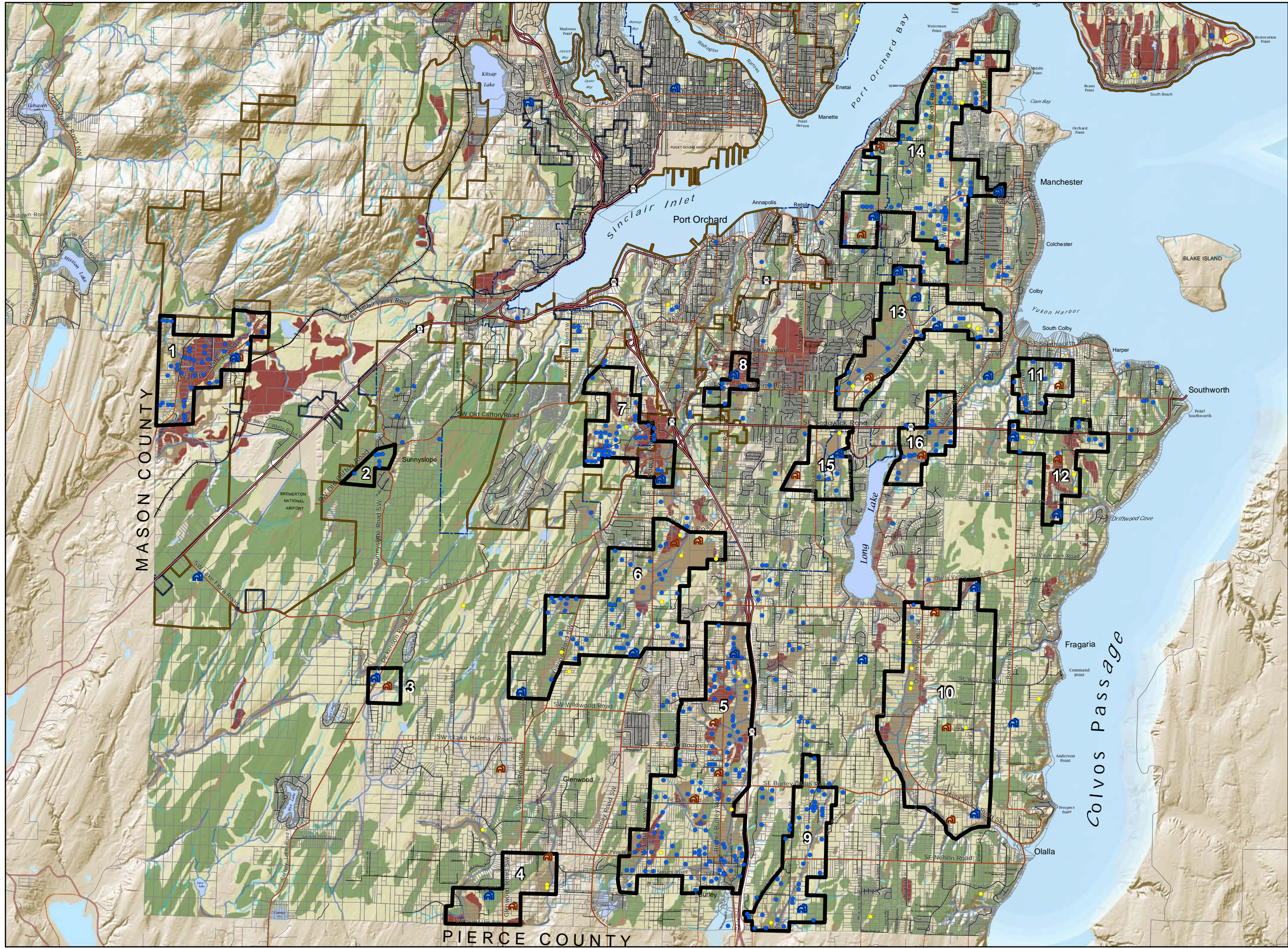
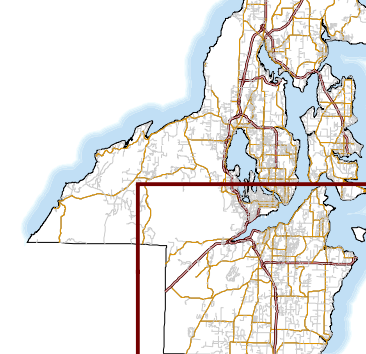
0 0.25 0.5 1 1.5 2 Miles

This map was created from existing map sources, not from field surveys. While great care was taken in using the most current map sources available, no warranties of any sort, including accuracy, fitness, or merchantability accompany this product. The user of this map assumes responsibility for determining its suitability for its intended use.

* THIS MAP IS NOT A SUBSTITUTE FOR FIELD SURVEY *

Farm locations represented on this map are estimated

DRAFT
 Map Date: May, 2011



MASON COUNTY

PIERCE COUNTY

Colvos Passage